

# Retail Space for Lease

BRIMFIELD, OHIO

4050 Cascades Blvd



# Fact Sheet

4050 Cascades Blvd

BRIMFIELD, OHIO

- Available Space:
  - Suite G2- 2,250 SF
  - Suite J- 1,500 SF
  - Suite O- 4,624 SF
  - Suite P- 5,100 SF
  - 1- 1,500 SF
- Anchor sites, outlots and in-line space available; 3,000 parking spaces
- 650,000 GLA; 110 Acres
- Fast growing regional development; nearby tenants include Wal-Mart Supercenter, Lowe's, Marshalls, PetCo and Kohl's with traffic counts of 57,000 VPD on I-76
- Maple Crest Retail Center now open directly across Tallmadge Road

## DEMOGRAPHICS

### ESTIMATED POPULATION

1 Mile: 23,916  
3 Miles: 122,422  
5 Miles: 241,591

### DAYTIME EMPLOYESS

1 Mile: 7,323  
3 Miles: 37,086  
5 Miles: 93,999

### AVERAGE HH INCOME

1 Mile: \$96,750  
3 Miles: \$82,946  
5 Miles: \$83,891

# Aerial

BRIMFIELD, OHIO

4050 Cascades Blvd

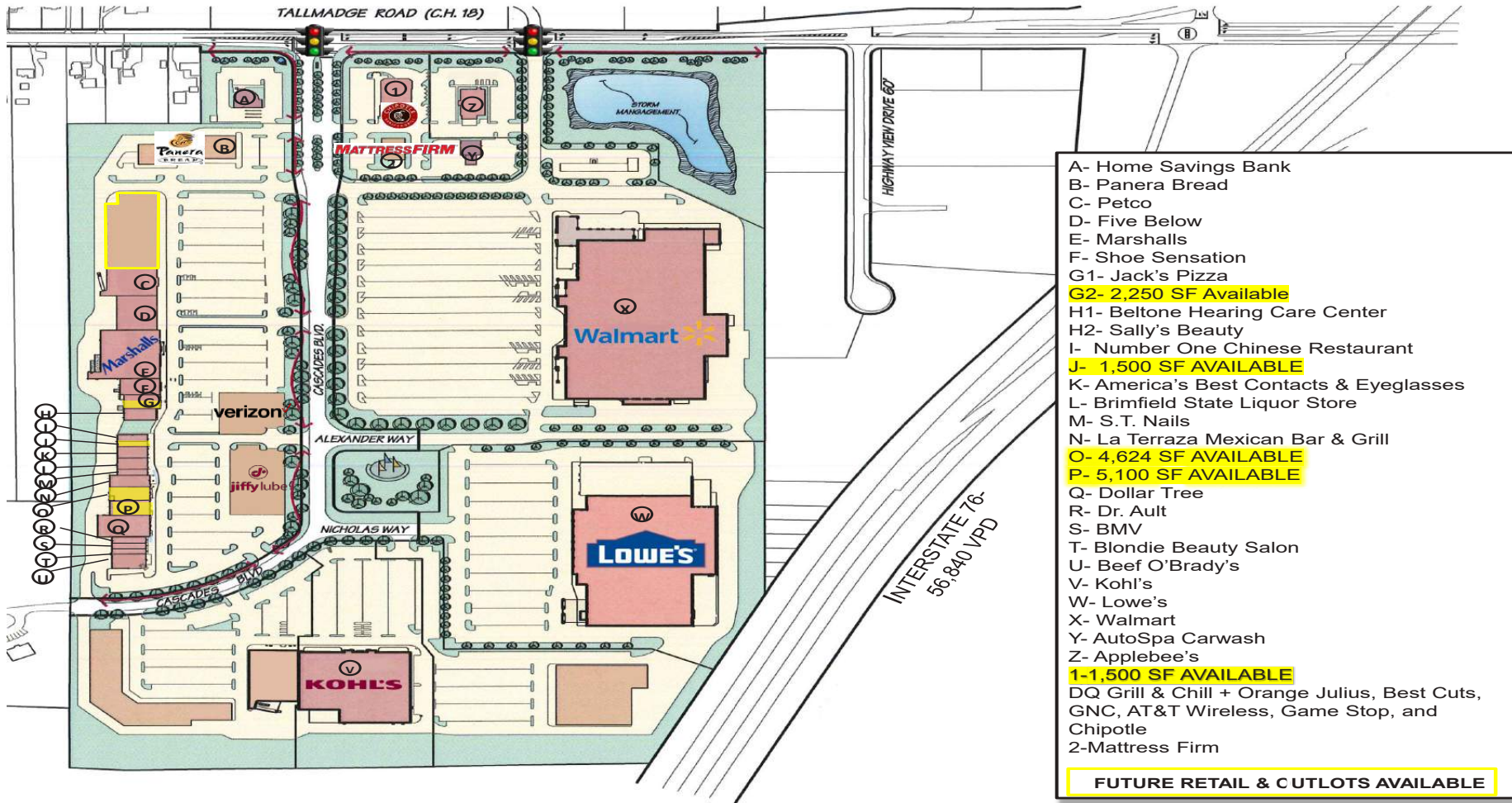


AERIAL

# Site Plan

BRIMFIELD, OHIO

4050 Cascades Blvd



- A- Home Savings Bank
  - B- Panera Bread
  - C- Petco
  - D- Five Below
  - E- Marshalls
  - F- Shoe Sensation
  - G1- Jack's Pizza
  - G2- 2,250 SF Available
  - H1- Beltone Hearing Care Center
  - H2- Sally's Beauty
  - I- Number One Chinese Restaurant
  - J- 1,500 SF AVAILABLE
  - K- America's Best Contacts & Eyeglasses
  - L- Brimfield State Liquor Store
  - M- S.T. Nails
  - N- La Terraza Mexican Bar & Grill
  - O- 4,624 SF AVAILABLE
  - P- 5,100 SF AVAILABLE
  - Q- Dollar Tree
  - R- Dr. Ault
  - S- BMV
  - T- Blondie Beauty Salon
  - U- Beef O'Brady's
  - V- Kohl's
  - W- Lowe's
  - X- Walmart
  - Y- AutoSpa Carwash
  - Z- Applebee's
  - 1-1,500 SF AVAILABLE
  - DQ Grill & Chill + Orange Julius, Best Cuts, GNC, AT&T Wireless, Game Stop, and Chipotle
  - 2-Mattress Firm
- FUTURE RETAIL & CUTLOTS AVAILABLE**

# SITE PLAN

4050 Cascades Blvd

# Property Photos

BRIMFIELD, OHIO



# Property Photos

4050 Cascades Blvd

BRIMFIELD, OHIO



PHOTOS

# Property Photos

4050 Cascades Blvd

BRIMFIELD, OHIO



PHOTOS

4050 Cascades Blvd

# Demos

BRIMFIELD, OHIO

## Summary Profile

2010-2020 Census, 2024 Estimates with 2029 Projections  
 Calculated using Weighted Block Centroid from Block Groups



Lat/Lon: 41.0998/-81.3859

4050 Cascades Blvd Brimfield Twp, OH 44240	1 mi radius	3 mi radius	5 mi radius
<b>Population</b>			
2024 Estimated Population	2,255	23,916	122,422
2029 Projected Population	2,262	23,877	122,566
2020 Census Population	2,297	24,569	122,534
2010 Census Population	2,037	23,274	121,316
Projected Annual Growth 2024 to 2029	-	-	-
Historical Annual Growth 2010 to 2024	0.8%	0.2%	-
2024 Median Age	40.2	42.4	38.2
<b>Households</b>			
2024 Estimated Households	932	10,363	52,792
2029 Projected Households	943	10,423	53,258
2020 Census Households	926	10,329	51,782
2010 Census Households	794	9,380	49,404
Projected Annual Growth 2024 to 2029	0.2%	0.1%	0.2%
Historical Annual Growth 2010 to 2024	1.2%	0.7%	0.5%
<b>Race and Ethnicity</b>			
2024 Estimated White	88.9%	88.7%	82.0%
2024 Estimated Black or African American	4.1%	4.8%	9.1%
2024 Estimated Asian or Pacific Islander	3.5%	2.7%	4.5%
2024 Estimated American Indian or Native Alaskan	-	-	0.1%
2024 Estimated Other Races	3.4%	3.7%	4.4%
2024 Estimated Hispanic	2.0%	1.9%	2.4%
<b>Income</b>			
2024 Estimated Average Household Income	\$108,669	\$96,750	\$82,946
2024 Estimated Median Household Income	\$97,209	\$79,858	\$67,848
2024 Estimated Per Capita Income	\$44,947	\$42,011	\$36,066
<b>Education (Age 25+)</b>			
2024 Estimated Elementary (Grade Level 0 to 8)	1.1%	1.5%	2.6%
2024 Estimated Some High School (Grade Level 9 to 11)	5.0%	4.5%	5.2%
2024 Estimated High School Graduate	24.4%	32.0%	32.2%
2024 Estimated Some College	21.2%	21.2%	20.9%
2024 Estimated Associates Degree Only	5.8%	7.7%	7.6%
2024 Estimated Bachelors Degree Only	27.0%	20.4%	18.8%
2024 Estimated Graduate Degree	15.5%	12.7%	12.7%
<b>Business</b>			
2024 Estimated Total Businesses	154	740	3,314
2024 Estimated Total Employees	1,680	7,323	37,086
2024 Estimated Employee Population per Business	10.9	9.9	11.2
2024 Estimated Residential Population per Business	14.7	32.3	36.9

©2024, Stas USA, Chandler, Arizona, 480-491-1112 Demographic Source: Applied Geographic Solutions 5/2024, TIGER Geography - R51

This report was produced using data from private and government sources deemed to be reliable. The information herein is provided without representation or warranty.

page 1 of 1

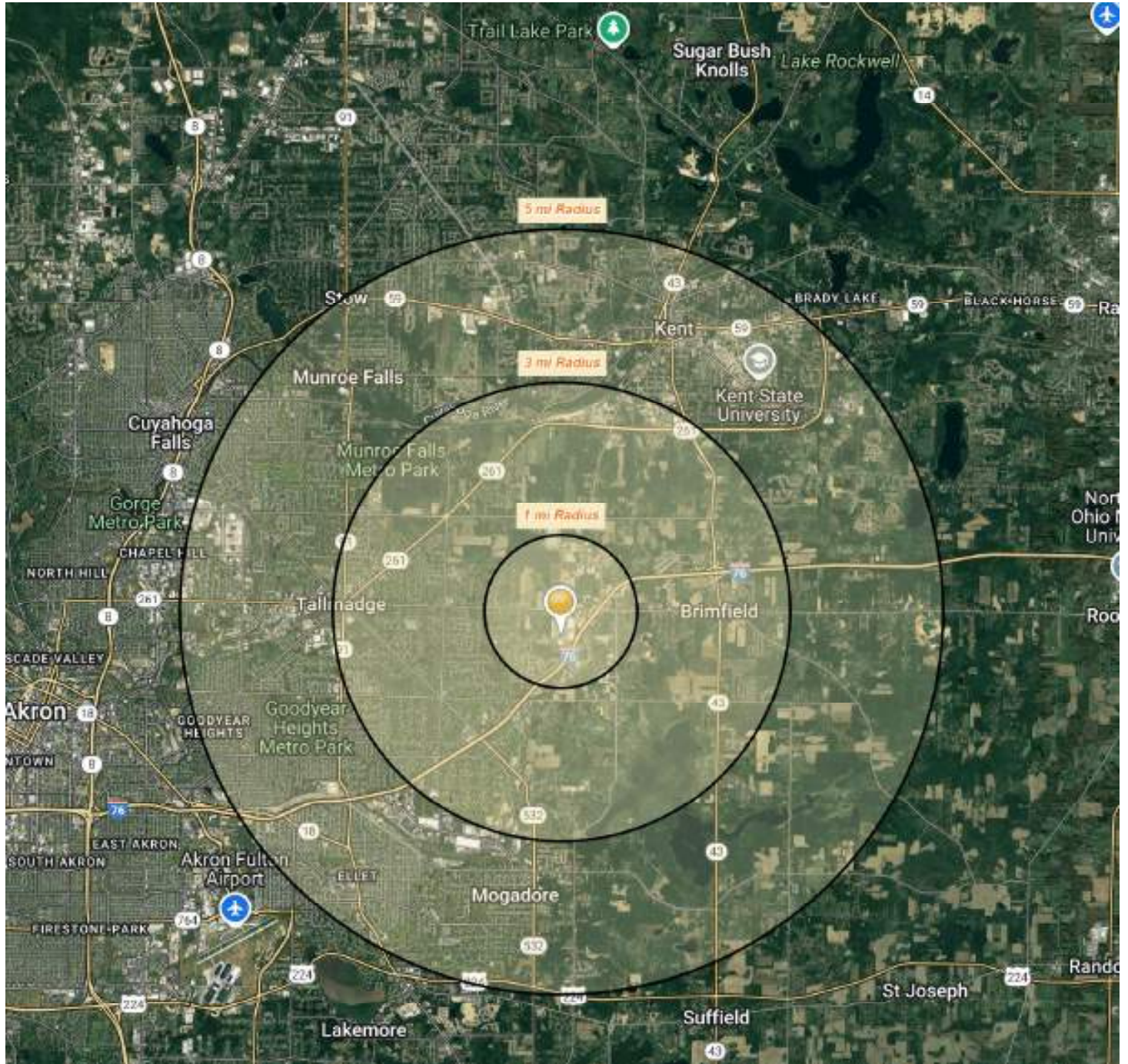
# DEMOS



# Radius Map

4050 Cascades Blvd

BRIMFIELD, OHIO



# Contact Information

BRIMFIELD, OHIO

4050 Cascades Blvd



Carla Massara  
Office: 216-514-1400 ext108  
[Cmassara@kowitzrealestate.com](mailto:Cmassara@kowitzrealestate.com)